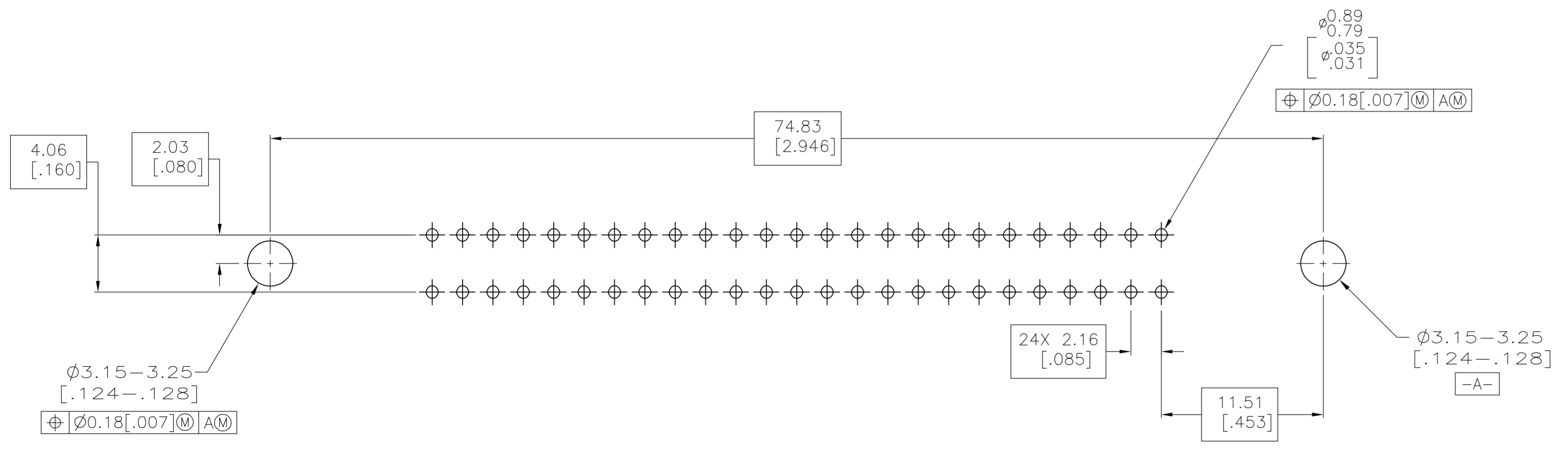
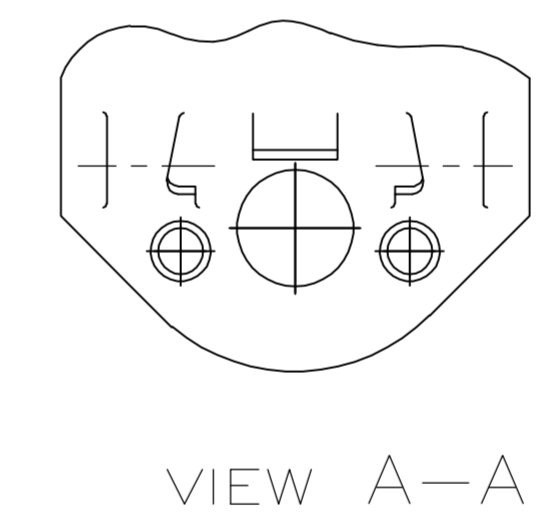
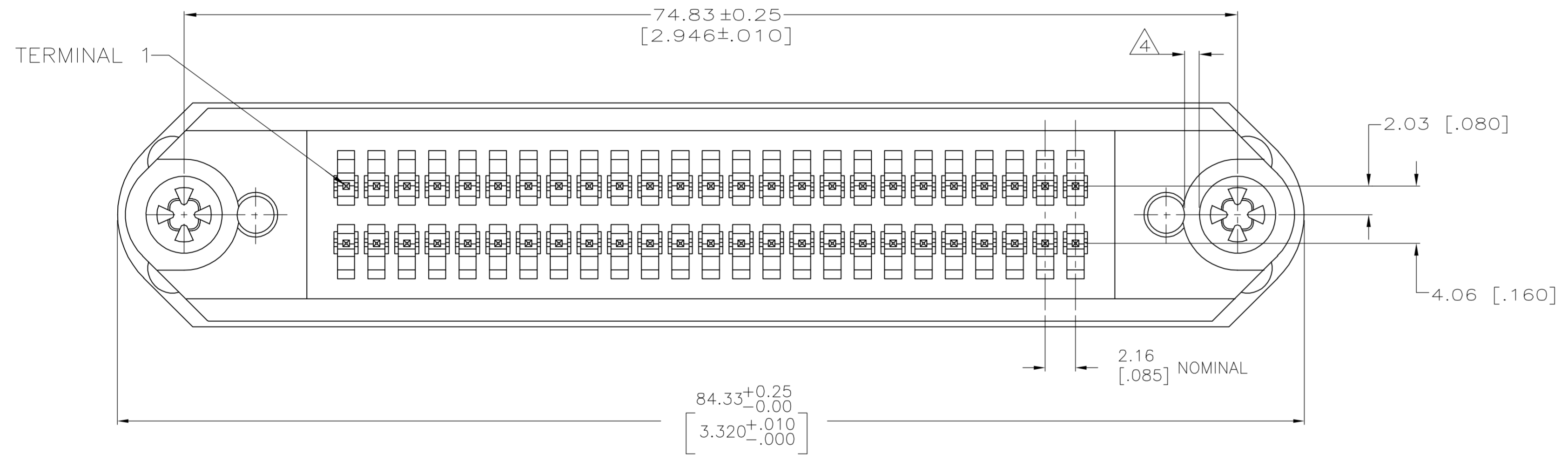


- 1** MATERIAL:
 HOUSING: POLYESTER, BLACK.
 TERMINAL: COPPER ALLOY PLATED WITH 0.76µm [.000030] MINIMUM GOLD ON MATING SURFACE AND 3.81µm [.000150] MINIMUM TIN ON SOLDER PIN AREA OVER 1.27µm [.000050] MINIMUM NICKEL UNDERPLATE OVER ENTIRE TERMINAL.
 SHIELD: CARBON STEEL, PLATED BRIGHT NICKEL 2.54µm [.000100] MINIMUM.
 BAIL CLIP: PASSIVATED STAINLESS STEEL.
 BOARDLOCK: COPPER ALLOY WITH 5.08µm [.000200] MINIMUM TIN OVER 1.27µm [.000050] MINIMUM NICKEL UNDERPLATE.
 EYELET: BRASS WITH 1.02µm [.000040] MINIMUM STANNATE TIN ELECTROPLATE.
- 2** THE CONTACT SURFACES OF THE TERMINALS ARE COATED WITH LUBRICANT.
- 3** "1" ON THE HOUSING INDICATES LOCATION OF TERMINAL 1.
- 4** .04 INCH MINIMUM BETWEEN EYELET HEAD AND .10 DIAMETER HOLE IN HOUSING, 2 PLACES.
- 5** EYELET SHALL PROVIDE A CONTINUOUS AND RELIABLE GROUND PATH THROUGH THE BOARDLOCK.
- 6** LOCKING TAB RETAINS ENDS OF BAILS IN SHIELD LOCATIONS.



PRINTED CIRCUIT BOARD
 MOUNTING DIMENSIONS

5406874-1
 PART NUMBER

THIS DRAWING IS A CONTROLLED DOCUMENT.		DWG: B. MCMASTER	13JULY05	tyco Electronics	Tyco Electronics Corporation Harrisburg, Pa 17105-3608				
DIMENSIONS: mm [INCHES]		CHK: J. GERACE	13JULY05		APD: M. WALMSLEY	NAME: RECEPTACLE ASSEMBLY, 50 POSITION, BOARDLOCK, SHIELDED, LOW PROFILE, VERTICAL MOUNTING, WITH LOCKING TAB			
TOLERANCES UNLESS OTHERWISE SPECIFIED:		0 PLC ± -		PRODUCT SPEC		SIZE: A1	CAGE CODE: 00779	DRAWING NO: 5406874	RESTRICTED TO: -
1 PLC ± -		2 PLC ± 0.13 [.005]		APPLICATION SPEC					
3 PLC ± -		4 PLC ± -		WEIGHT: -		SCALE: 4:1		SHEET: 1 OF 1	
MATERIAL: 1		FINISH: 1		CUSTOMER DRAWING		REV: 0			